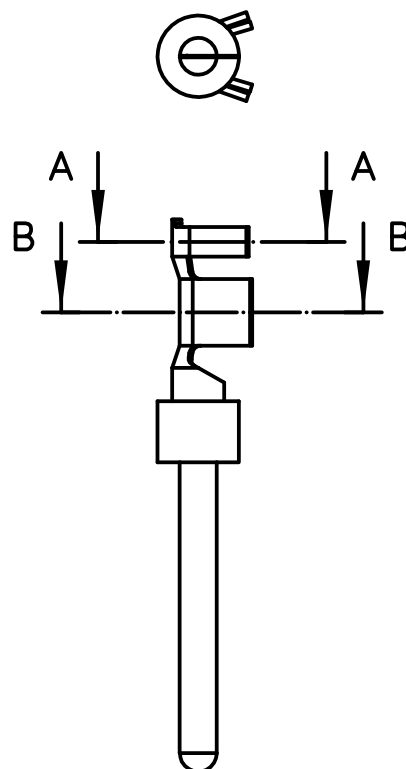
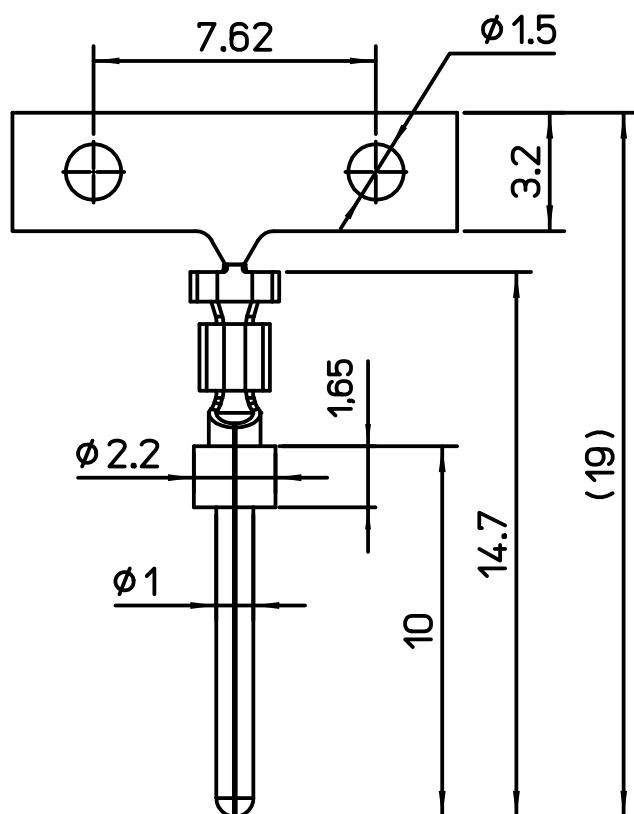
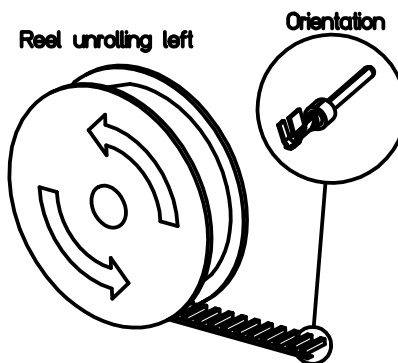
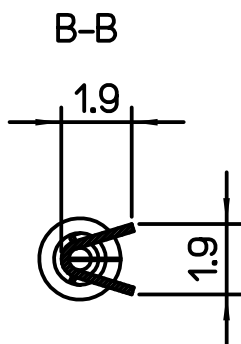
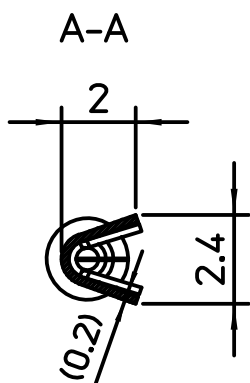


Diritti riservati

All rights reserved



ILME CODE	PERFORMANCE LEVEL
SIM1D 0.5C	PL1
SIM2D 0.5C	PL2
SIM3D 0.5C	PL3

- Selective Gold plating over Nickel in the contact area, tin plating in the crimp area, RoHS conform
- Material: brass (leadfree)
- Reel of 500 contacts

REV	DATA	FIRMA



Simplified representation with dimensions without tolerance

Original Size A4
Date 29/10/19
Sign. Pitasi

SIMxD 0.5C

Stamped male crimp contacts 5A 0.22-0.56mm , 20-24 AWG.

Scale
5:1

